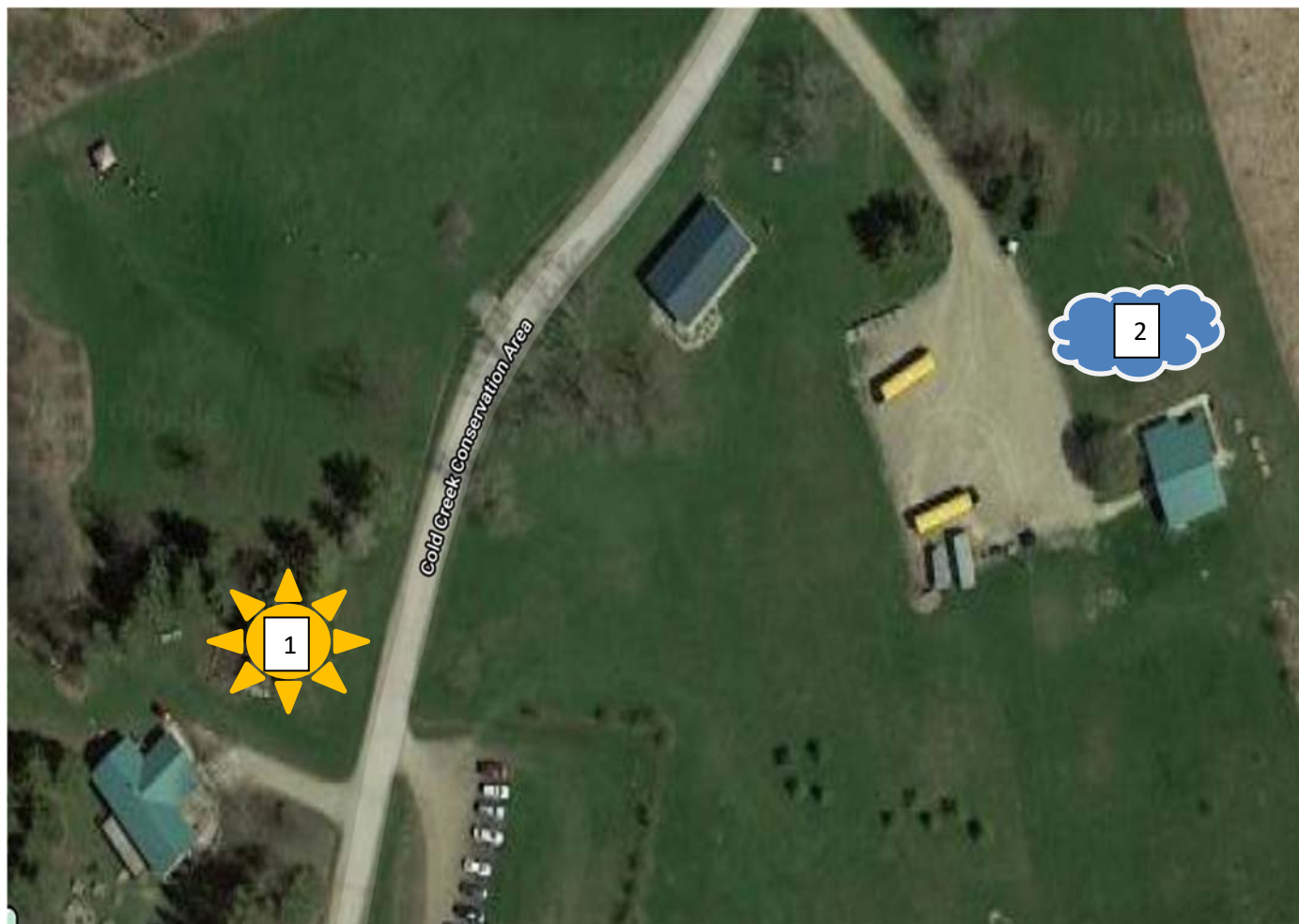
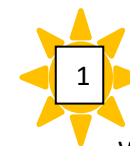


## COLD CREEK CONSERVATION AREA – 14125 11<sup>th</sup> Concession, Nobleton

Drop-off and Pick-up will be located outside at designated locations (As per Ministry of Health guidelines). For Cold Creek camps the designated sign in and out area is the **VISITORS CENTRE** and **EDUCATION CENTRE**



### Station 1 – Education Centre



#### JR. Outdoor Explorer

Weeks 1, 2, 3, 4, 5\*, 6, 7, 8, 9

### Station 2 – Visitors Centre



#### Archery Camp

Weeks – 1, 5\*

#### SR. Outdoor Explorer

Weeks – 2, 3, 4, 6, 7, 8, 9

### Sign In and Out Procedures

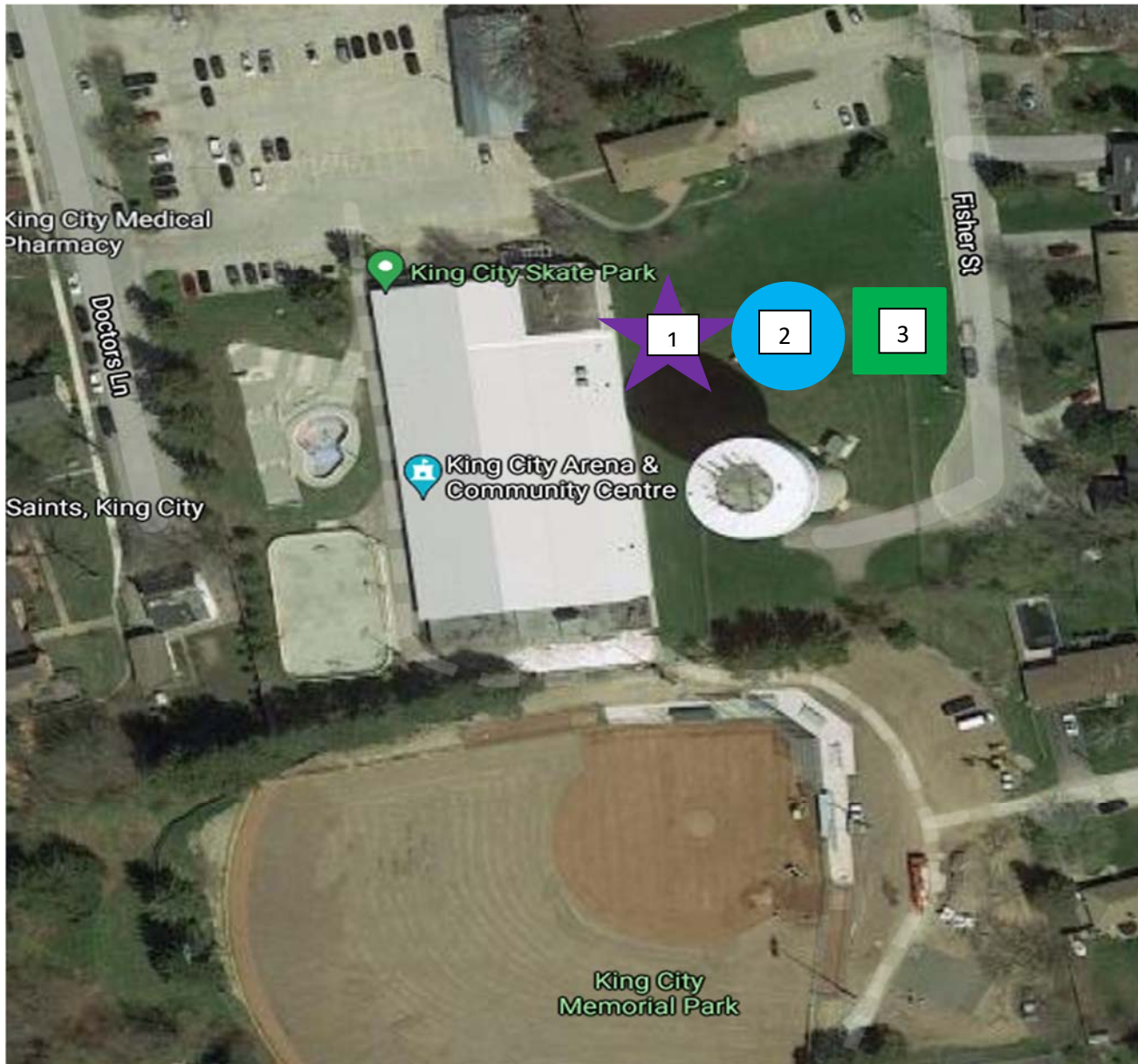
- Upon arrival ensure all patrons are following the appropriate COVID signage posted.
- Masks must be worn by parents/guardians and participants.
- The daily COVID Screening Questionnaire must be completed online prior to sign in for every camper ([www.screening.king.ca](http://www.screening.king.ca))
- Proof of green check mark will be required to show to camp staff before proceeding to sign in.
- We require all parents/guardians to sign their child in and out of camp daily.
- Parents/guardians will need to show photo ID daily upon pickup.
- Participants will only be signed out to parents/guardians who are listed as authorized on camper information form.




For more information call 905-833-5321 or email [camps@king.ca](mailto:camps@king.ca)

**KING CITY ARENA – 25 Doctors Lane, King City**


Drop-off and Pick-up will be located outside at designated locations (As per Ministry of Health guidelines). For King City Arena Camps the designated sign in and out area is the **KING CITY ARENA – EAST SIDE OF BUILDING in Large grass area**



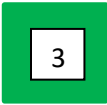
**Station 1**


**King Camp JR. – KA**  
**Weeks 1, 2, 3, 4, 5\*, 6, 7, 8, 9**

**Station 2**


**King Camp INT. – KA**  
**Weeks 1, 2, 3, 4, 5\*, 6, 7, 8, 9**

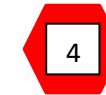
**Station 3**


**King Camp SR. – KA**  
**Weeks 1, 2, 3, 4, 5\*, 6, 7**

- Sign In and Out Procedures**
- Upon arrival ensure all patrons are following the appropriate COVID signage posted.
  - Masks must be worn by parents/guardians and participants.
  - The daily COVID Screening Questionnaire must be completed online prior to sign in for every camper ([www.screening.king.ca](http://www.screening.king.ca))
  - Proof of green check mark will be required to show to camp staff before proceeding to sign in.
  - We require all parents/guardians to sign their child in and out of camp daily.
  - Parents/guardians will need to show photo ID daily upon pickup.
  - Participants will only be signed out to parents/guardians who are listed as authorized on camper information form.

## KING CITY SENIORS CENTRE

Drop-off and Pick-up will be located outside at designated locations (As per Ministry of Health guidelines). For King City Senior Camps the designated sign in and out area will be located beside the main entrance of the King City Lions area (east) on the grass area.



### Station 4

LIT - Week: 1

**Messy Munchkins** – Weeks: 2, 6

**Art** – Weeks: 3, 7

**Around the Word** – Week: 4

**Photography** – Week: 5

**King Camp SR.** – KC – Weeks: 8, 9

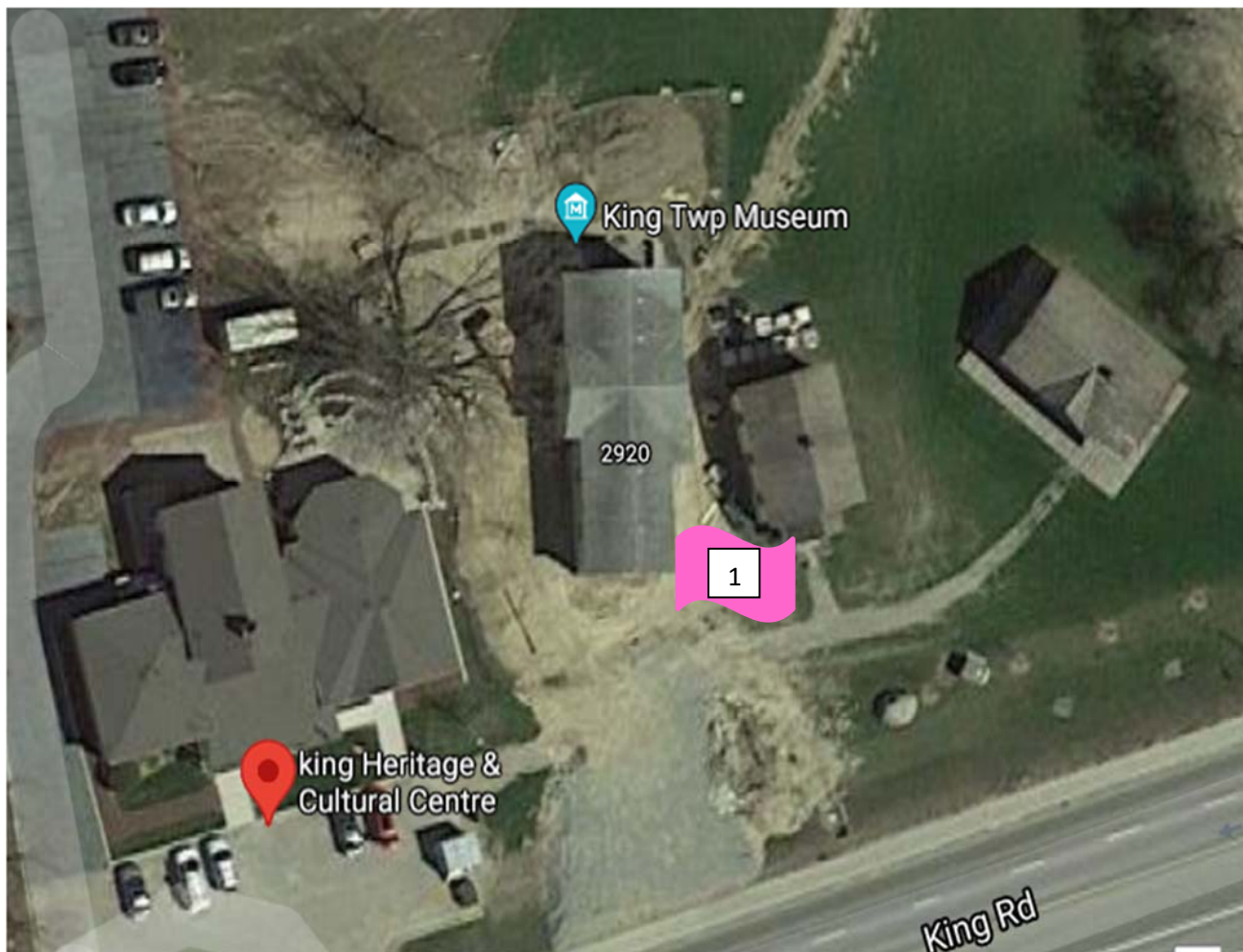
### Sign In and Out Procedures

- Upon arrival ensure all patrons are following the appropriate COVID signage posted.
- Masks must be worn by parents/guardians and participants.
- The daily COVID Screening Questionnaire must be completed online prior to sign in for every camper ([www.screening.king.ca](http://www.screening.king.ca))
- Proof of green check mark will be required to show to camp staff before proceeding to sign in.
- We require all parents/guardians to sign their child in and out of camp daily.
- Parents/guardians will need to show photo ID daily upon pickup.
- Participants will only be signed out to parents/guardians who are listed as authorized on camper information form.



## KING HERITAGE AND CULTURAL CENTRE – 2920 King Road, King City

Drop-off and Pick-up will be located outside at designated locations (As per Ministry of Health guidelines). For King Heritage and Cultural camps, the designated sign in and out area will be **LASKAY HALL**



### Station 1 – Laskay Hall

1

**Glamour** - Weeks: 1, 7

**CSI** – Weeks: 2, 6

**Dance** – Week: 3

**Drama** – Week: 9

**Heritage Hero's** – Week: 4

**Time Travellers** – Weeks: 5\*, 8

### Sign In and Out Procedures

- Upon arrival ensure all patrons are following the appropriate COVID signage posted.
- Masks must be worn by parents/guardians and participants.
- The daily COVID Screening Questionnaire must be completed online prior to sign in for every camper ([www.screening.king.ca](http://www.screening.king.ca))
- Proof of green check mark will be required to show to camp staff before proceeding to sign in.
- We require all parents/guardians to sign their child in and out of camp daily.
- Parents/guardians will need to show photo ID daily upon pickup.
- Participants will only be signed out to parents/guardians who are listed as authorized on camper information form.



For more information call 905-833-5321 or email [camps@king.ca](mailto:camps@king.ca)

**NOBLETON ARENA AND NOBLETON COMMUNITY HALL – 15 Old King Road, Nobleton**

Drop-off and Pick-up will be located outside at designated locations (As per Ministry of Health guidelines). For Nobleton Arena and Nobleton Community Hall camps the designated sign in and out area will be located beside the **NOBLETON OUTDOOR POOL (GRASS AREA) AND SOCCER FIELD (BEHIND OUTDOOR RINK)**



**Station 1**  
**King Camp JR. – NA**  
 Weeks 1, 2, 3, 4, 5\*, 6, 7, 8, 9

**Station 2**  
**King Camp INT. – NA**  
 Weeks 1, 2, 3, 4, 5\*, 6, 7, 8, 9

**Station 3**  
**King Camp SR. – NA**  
 Weeks 1, 2, 3, 4, 5\*, 6, 7, 8, 9

**Station 4**  
**Spies & Secret Agents – Week: 1**  
**Magic & Mystery – Weeks: 2, 6**  
**Jungle Gym – Weeks: 3, 7**  
**Everything Animal – Week: 4**  
**How it's Made – Week 5\***

**Sign In and Out Procedures**

- Upon arrival ensure all patrons are following the appropriate COVID signage posted.
- Masks must be worn by parents/guardians and participants.
- The daily COVID Screening Questionnaire must be completed online prior to sign in for every camper ([www.screening.king.ca](http://www.screening.king.ca))
- Proof of green check mark will be required to show to camp staff before proceeding to sign in.
- We require all parents/guardians to sign their child in and out of camp daily.
- Parents/guardians will need to show photo ID daily upon pickup.
- Participants will only be signed out to parents/guardians who are listed as authorized on camper information form.