

PUBLIC INFORMATION PACKAGE

LandSquared (on behalf of Rogers Communications Inc.)
25m Slimline Monopole Telecommunications Structure
235 Juliana Road, Township of King, ON

LandSquared File Number: C8774

Virtual Public Information Session

Any person may attend a Virtual Public Information Session to be held on **September 16, 2021 from 6:00 pm to 7:00 pm**. Contact tracey@landsquared.com for information on how to access the session.

Who is proposing a tower?

In response to significant rising demand for wireless voice and data services in this area, LandSquared, on behalf of Rogers Communications Inc. "Rogers", is proposing to construct a new telecommunication tower installation to facilitate colocation for telecommunication carriers.

What is being proposed?

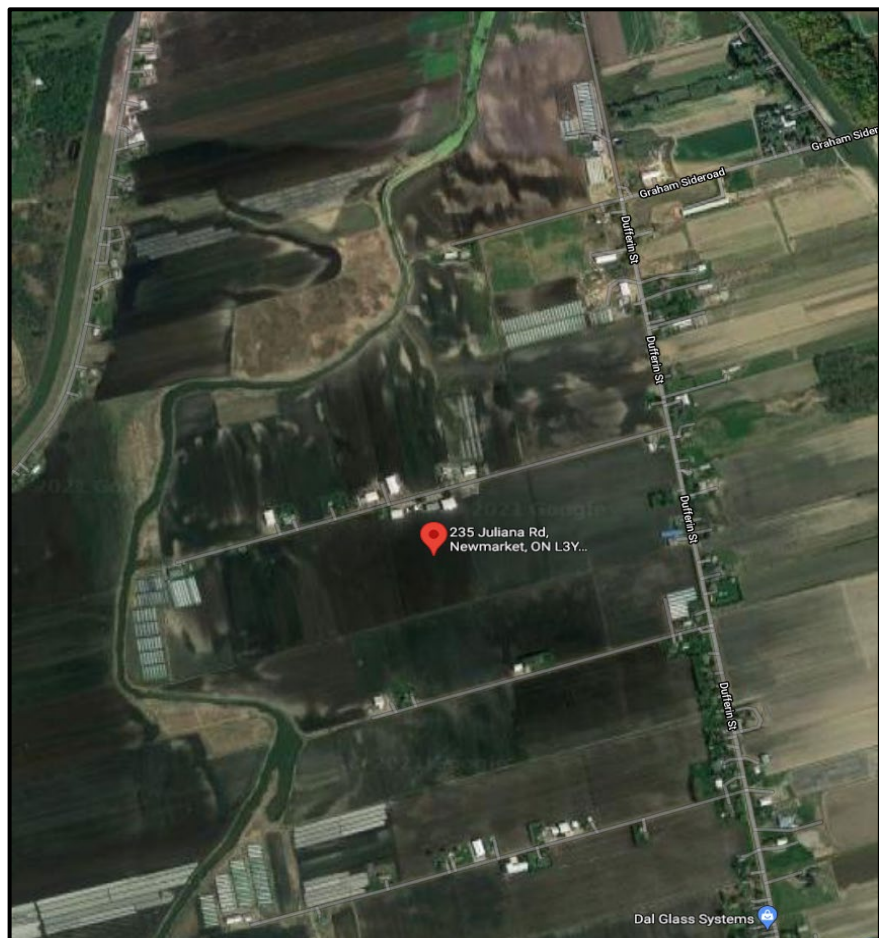
The proposed structure is a 25m tall slimline monopole telecommunications structure, situated within a proposed compound area with equipment cabinets.

Where is the tower proposed?

A telecommunications structure with equipment cabinets at its base is proposed on property located at 235 Juliana Road, Township of King, ON.

Why is this installation needed?

There is an increased need and reliance for optimal to near flawless wireless telecommunication coverage to address a myriad of needs, whether in an outdoors environment or indoors.



The proposed new installation will significantly enhance current intermittent service and with a growing customer base, the current tower setup is reaching capacity. Due to increased personal

device use in and around the rural part of the Township of King, there is a greater need for coverage in the community surrounding the proposed tower location.

As a result, residents and commuters might experience limited wireless coverage in the area and slow data transmission speeds. LandSquared on behalf of Rogers Communications Inc., is working to deliver improved cell phone coverage to the area.

Public Comments

The public commenting period closes **September 16, 2021**. Please reference **C8774** in your correspondence to the Applicant Contact.

Applicant Contact Information

Tracey Pillon-Abbs, LandSquared
1375 North Service Road East, Oakville, ON L6H 1A7
226-340-1232
tracey@landsquared.com

Municipal Contact Information

Paul Kulyk, Planner II
Township of King – Planning Department
2585 King Road, King, ON, L7B 1A1
905-833-5321 ext. 4063
pkulyk@king.ca

Innovation, Science and Economic Development Canada

ISED, Toronto District Office
151 Yonge Street, 4th Floor, Toronto, ON, M5C 2W7
1-855-465-6307
ic.spectrumtoronto-spectretoronto.ic@canada.ca

Local Land Use Requirement

Telecommunication tower systems are exclusively regulated by Federal legislation under the Radiocommunication Act and administered by ISED. Therefore, Provincial legislation such as the Planning Act, including zoning by-laws, does not apply to these facilities.

It is important to understand that ISED, while requiring proponents to follow the Municipal Protocol, makes the final decision on whether or not a tower system can be constructed. The municipality can only provide comments to ISED and does not have the authority to stop the construction of a telecommunications tower facility.

Health Canada's Safety Code 6 Compliance

Health Canada's role is to protect the health of Canadians, so it is the Department's responsibility to research and investigate any possible health effects associated with exposure to electromagnetic energy, such as that coming from cell phones and base stations. Health Canada has developed guidelines for safe human exposure to RF energy, which are commonly known as Safety Code 6.

All carriers placing their equipment on the tower must adhere to Health Canada's Safety Code 6 regarding radiofrequencies and maximum power input.

LandSquared attests that the telecommunication tower system described in this notification package will comply with Health Canada’s Safety Code 6 limits, as may be amended from time to time, for the protection of the general public including any combined effects of additional carrier co-locations and nearby installations within the local radio environment. For more information on Safety Code 6, please visit the following Health Canada site: www.healthcanada.gc.ca/radiation

Engineering Practices

LandSquared (on behalf of Rogers Communications Inc.) attests that the telecommunication system as proposed for this site will be constructed in compliance with the Canadian Standard Association and comply with good engineering practices including structural adequacy.

Canadian Environmental Assessment Act

LandSquared (on behalf of Rogers Communications Inc.) attests that the telecommunication system described in this notification package is excluded from environmental assessment under the *Canadian Environmental Assessment Act, 2012* (CEAA 2012), as the telecommunication system is exempt from review.

Transportation Canada’s Aeronautical Obstruction Marking Requirements

LandSquared (on behalf of Rogers Communications Inc.) attests that the telecommunication system described in this notification package will comply with Transport Canada / NAV CANADA aeronautical safety requirements. When Transport Canada / NAV Canada have determined if any aeronautical safety features are required for the installation, such information will be made available for public review.

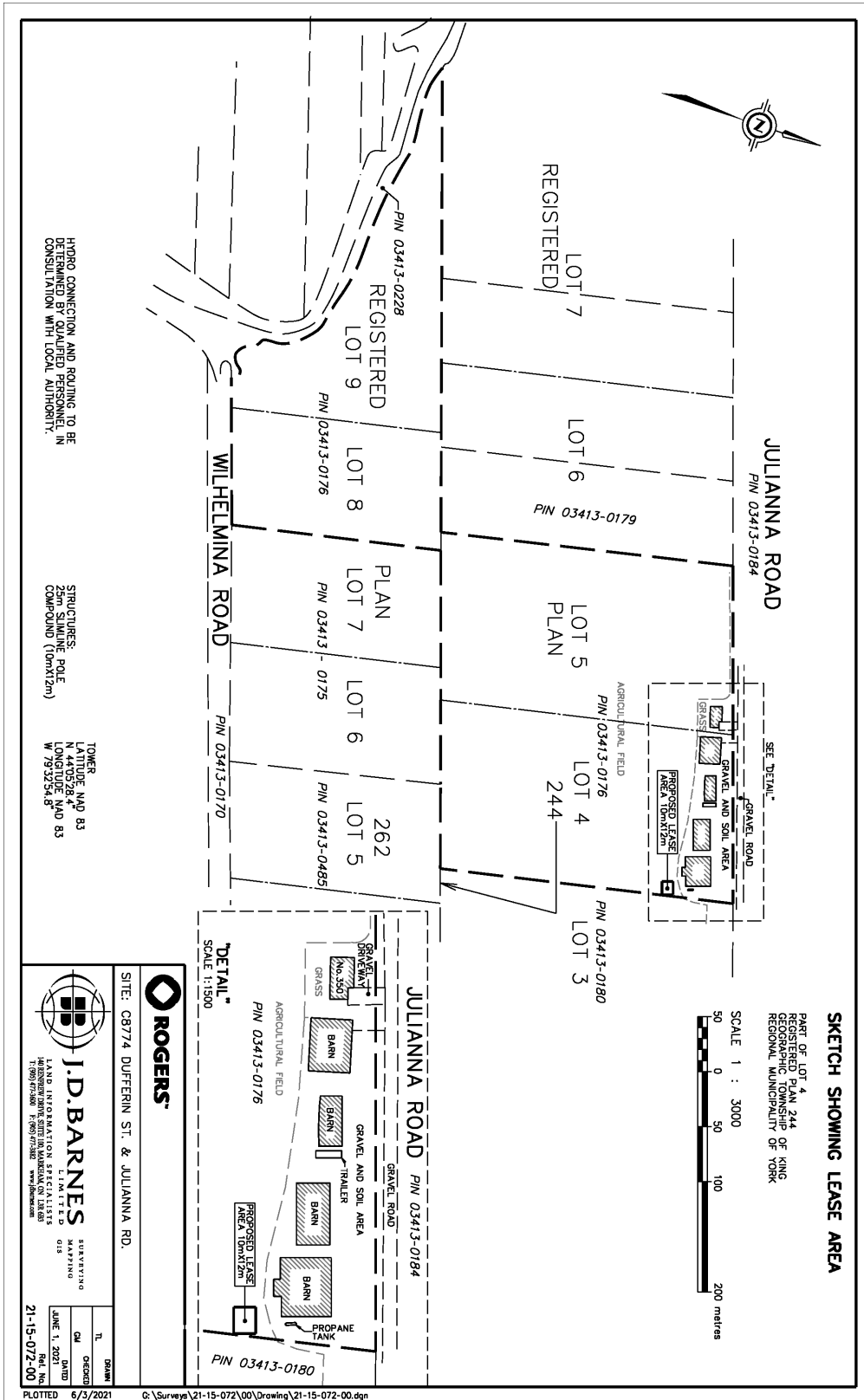
Public Disclosure of Comments

Submissions received shall form part of ISEDC’s Public Consultation Process under the Spectrum Management and Telecommunications Client Procedures Circular CPC-2-0-03, Issue 5, and may be made public as part of a report issued to interested parties, the Municipality and ISEDC.

Photo Simulated Image (view from 19641 Dufferin St)



Site Plan (Not to scale)



HYDRO CONNECTION AND ROUTING TO BE DETERMINED BY QUALIFIED PERSONNEL, IN CONSULTATION WITH LOCAL AUTHORITY.

STRUCTURES: 25m STALLING POLE COMPOUND (10mX12m)

TOWER LIGHT POLE NAD 83 N 44°05'28.4" LONGITUDE NAD 83 W 79°32'54.8"



J.D.BARNES
LAND INFORMATION SYSTEMS
SURVEYING
MAPPING
GIS

DATE: JUNE 1, 2021
RDL NO: 21-15-072-00

ROGERS
SITE: C8774 DUFFERIN ST. & JULLIANNA RD.