

COMMUNITY PROFILE “ABOUT KING”

Community Profile “About King”:

The Township of King is a unique and special place that prides itself on its natural heritage and scenic beauty, its agricultural lands, its rich local and rural history and its rural traditions of farming, mills and a vibrant quality of life. King Township is located just 40 km north of downtown Toronto, covering an area of 339 square kilometers boasting some of Ontario's most beautiful and rolling country sides and natural areas. Over 99% of King Township is within the Greenbelt area of which 65% of King's area is contained within the Oak Ridges Moraine. The Moraine is a famed geological formation created by a retreating glacier in the last ice age.

King Township is one of nine local municipalities that make up the Regional Municipality of York. It encompasses the villages and hamlets of Ansnorveldt, Kettleby, King City, Laskay, Lloydtown, Nobleton, Pottageville, Schomberg and Snowball. The Township is easily accessible by Highways 9, 27, 400, and 407 and is only 30 minutes from Toronto Pearson International Airport.

The Township has a population that surpasses 24,000 people and is projected to grow to 35,000 people by 2031. An important asset of King Township is its strong rural economy and agricultural sector, which depends upon the Holland Marsh's deep fertile soils and rich growing season. About 60% of the Holland Marsh, also known as 'Ontario's Vegetable Basket' is located in King.

The Township's major infrastructure includes: roads and bridges, water distribution and wastewater collection, waste management (collection), disposal and recycling, recreation facilities, parks and fire & emergency services. It also includes a collection of administration facilities for fire, operations, and other service departments. In addition, it includes a collection of fleet for our parks, operations and fire & emergency services.

The Township of King provides the following major services and many others:

- Fire & emergency services
- Recreation programs and facilities
- Water distribution systems
- Wastewater collection systems
- Garbage collection, disposal and recycling
- Municipal roads and bridges
- Parks
- Economic development
- Community planning and growth management

The Corporation of the Township of King

Township of King Council

King Township is governed by an elected Mayor and six Councillors, each representing one of the six wards within the Township. As head of Council, the Mayor represents the Township on York Regional Council. Council sets policy and directs the affairs of the municipality with assistance from a staff of dedicated full-time employees.

Legislation dictates municipal elections be held every four years. The next municipal election is scheduled for the fall of 2022.

The Township's current Members of Council for the 2019 – 2022 terms are shown below:



Mayor
Steve Pellegrini



Councillor, Ward 1
Jordan Cescolini



Councillor, Ward 2
David Boyd



Councillor, Ward 3
Jakob Schneider



Councillor, Ward 4
Bill Cober



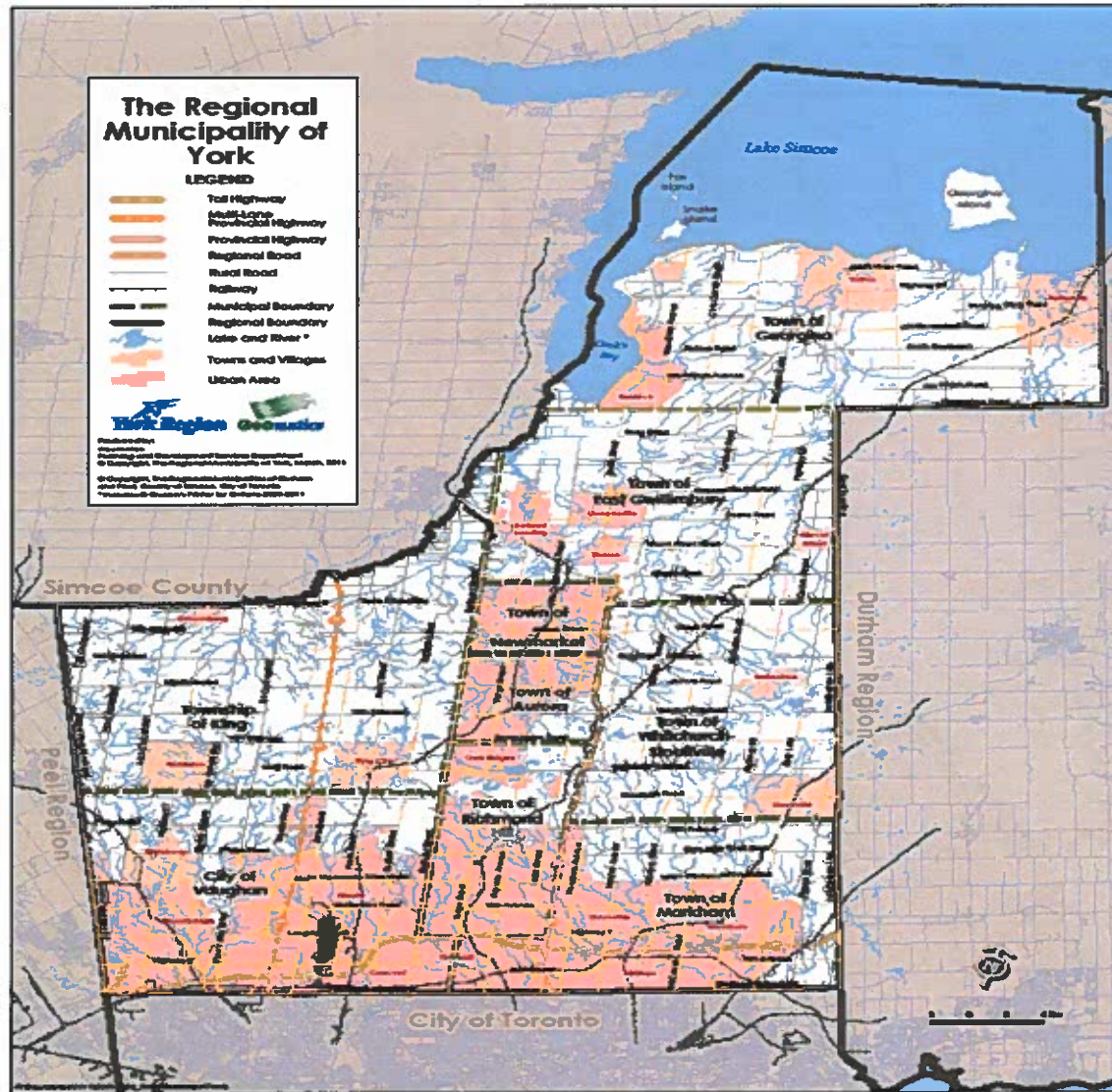
Councillor, Ward 5
Debbie Schaefer



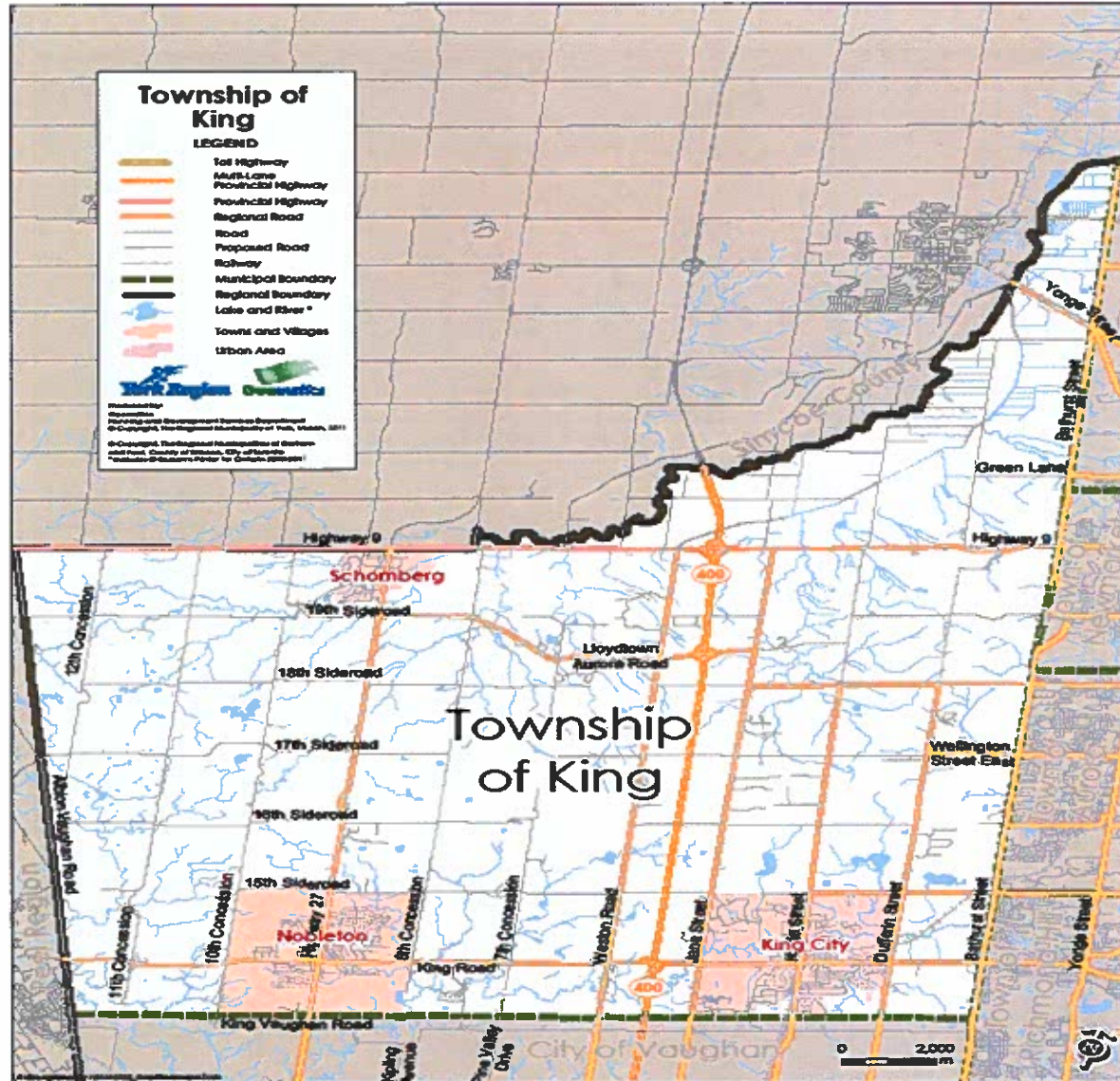
Councillor, Ward 6
Avia Eek

The Corporation of the Township of King

A map of the Region of York and a map of the Township of King follow on this page and the next page.



The Corporation of the Township of King



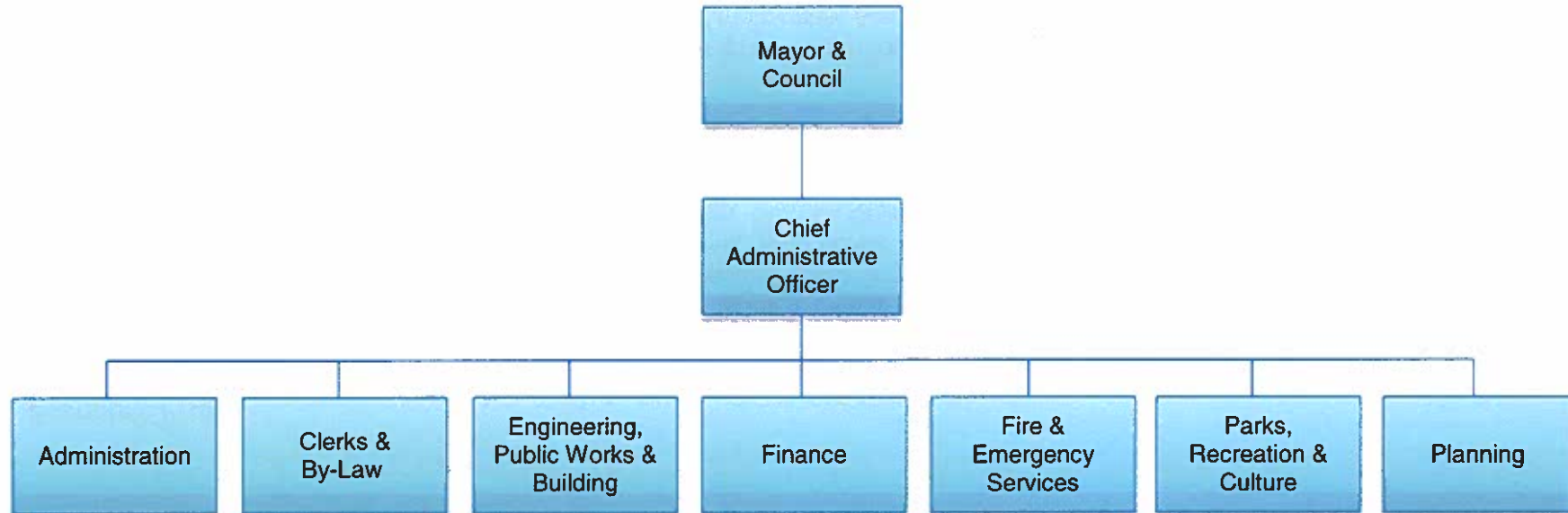
The Corporation of the Township of King

Township of King Organizational Chart

The Chief Administrative Officer (CAO) is responsible for the corporate management of the Township. The CAO is responsible for the efficient and effective management and administration of all Township Departments including the overall planning, co-ordination and direction of municipal operations in collaboration with departmental Directors, and in accordance with the objectives, policies and plans approved by Township Council.

Seven key departmental Directors report directly to the CAO. Each Director is responsible to oversees the day to day operation of an assigned department and related service delivery. The CAO and the Directors of each service area/department form the Township’s Senior Management Team. The CAO is Chair of the Administrative Committee of Department Heads (The Senior Management Team).

The CAO also co-ordinates and directs the initiatives, operating procedures and resources of the Administration Department which is comprised of Communications, Economic Development, Human Resource Management, and Information Technology.



The Corporation of the Township of King

Economic Profile

Expected to grow to 35,000 over the next fifteen years and located approximately 40 kilometres north of downtown Toronto, King is the location of choice for a diverse mix of over 575 businesses including the corporate head office of The Clublink Corporation, LGL Environmental Research Associates, Robert B Somerville, BC Instruments and Showa Canada. The Township's three main villages: King City, Nobleton and Schomberg attract business and residents seeking to live in rural communities providing a superb quality of life second to none, but in close proximity to urban amenities. King is also home to three post-secondary institutions focused on applied research, education and training opportunities being: Seneca College - King City Campus; Koffler Scientific Reserve as part of the University of Toronto; and the Muck Crop Research Station as part of the University of Guelph.

Employment Area Lands

Several major designated or zoned industrial and commercial areas are found within the existing community plans of King City, Nobleton and Schomberg including: 95 Acres of Prestige Employment Area within the King City Community Plan. Approximately 35 acres of lands on Highway 27 designated for Business Area use within the Nobleton Community Plan; and approximately 20 acres of Industrial/Highway Commercial lands in the Schomberg Community Plan.

There are also a number of opportunities for redevelopment intensification in the three village cores and a community improvement plan, financial incentives program and comprehensive village core design guidelines will nurture and guide development in a sustainable manner.