

Welcome

to the

King Township Core Areas Parking Study Public Information Centre

Purpose of the meeting:

- » Learn about the study's purpose and scope.
- » Discuss issues and ask questions.
- » Provide input on issues to be investigated in the study.



Study Scope and Objectives

OBJECTIVE: Analyze opportunities and needs for parking in the core areas of King City, Nobleton, and Schomberg while:

- » Ensuring adequate future parking supply;
- » Addressing stakeholder concerns; and
- » Developing parking policies and strategies that are representative of King Township’s plan to improve the Core Areas.

Project Schedule: The project kicked off in February 2018, and is targeting a completion date of August 2018, with the report going to Council in September 2018

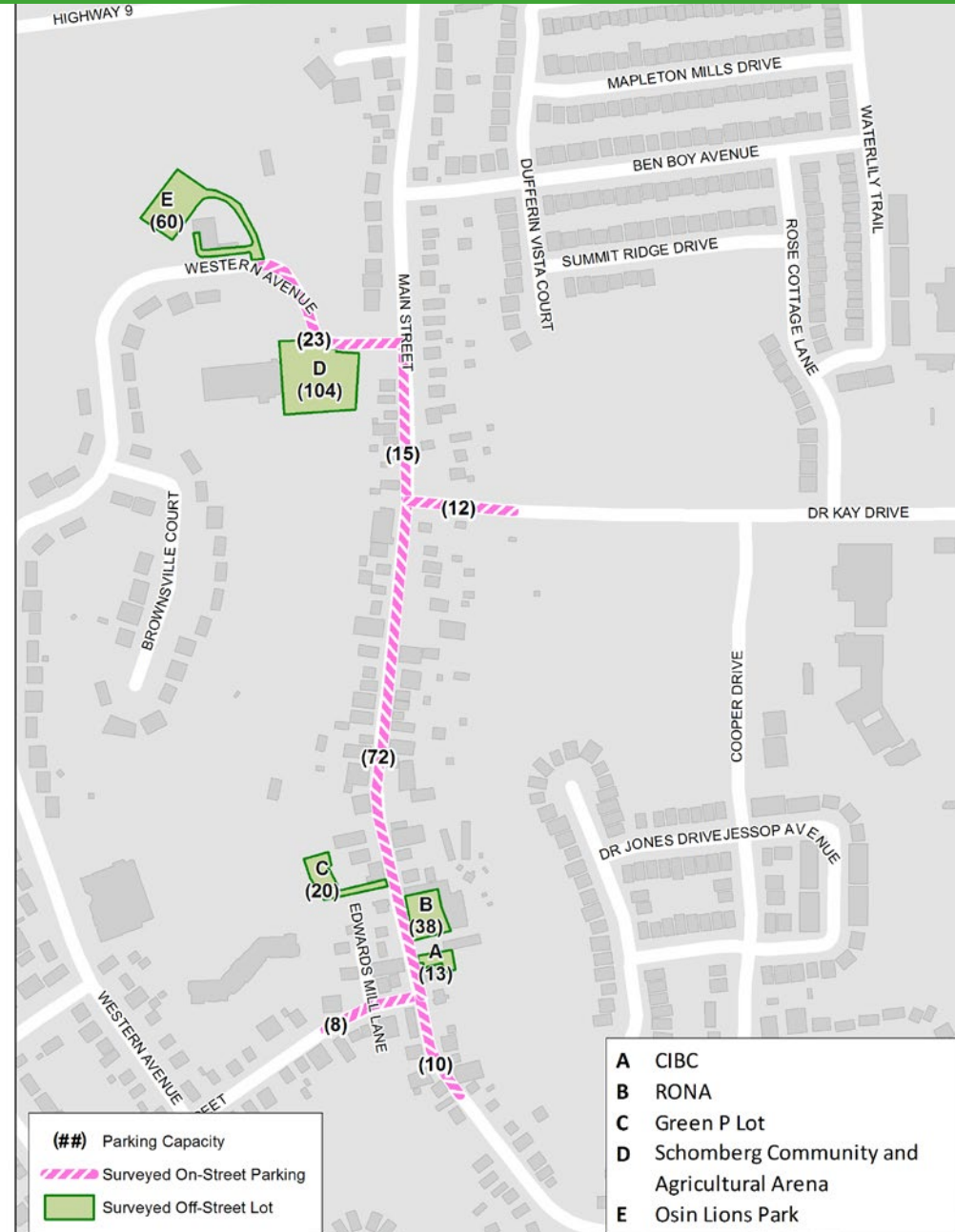
| Project Schedule | Feb. | Mar. | Apr. | May | Jun. | Jul. | Aug. | Sept. |
|---|------|------|------|-----|------|------|------|-------|
| Task 1: Project Start-up and Scoping | | | | | | | | |
| Task 2: Public and Stakeholder Consultation | | | | | | | | |
| Task 3: Data Collection | | | | | | | | |
| Task 4: Existing Parking Supply and Demand | | | | | | | | |
| Task 5: Future Parking Needs | | | | | | | | |
| Task 6: Parking Policies and Strategies | | | | | | | | |
| Task 7: Conclusions and Recommendations | | | | | | | | |

Schomberg Study Area and Inventory

COVERS THE CORE AREA OF SCHOMBERG, ALONG MAIN STREET

Schomberg Core Area provides 375 parking spaces, plus on-street neighbourhood parking, consisting of the following:

- » Public on-street parking (140 spaces);
- » Public off-street parking (20 spaces); and
- » Publicly accessible private parking (215 spaces).



Schomberg Core Area Identified Parking Needs

Through discussions with King Township staff, an online survey, as well as public and other stakeholders, the following parking related needs were identified for the Schomberg Core Area:



» Options for core area residents without access to off-street parking



» More parking enforcement



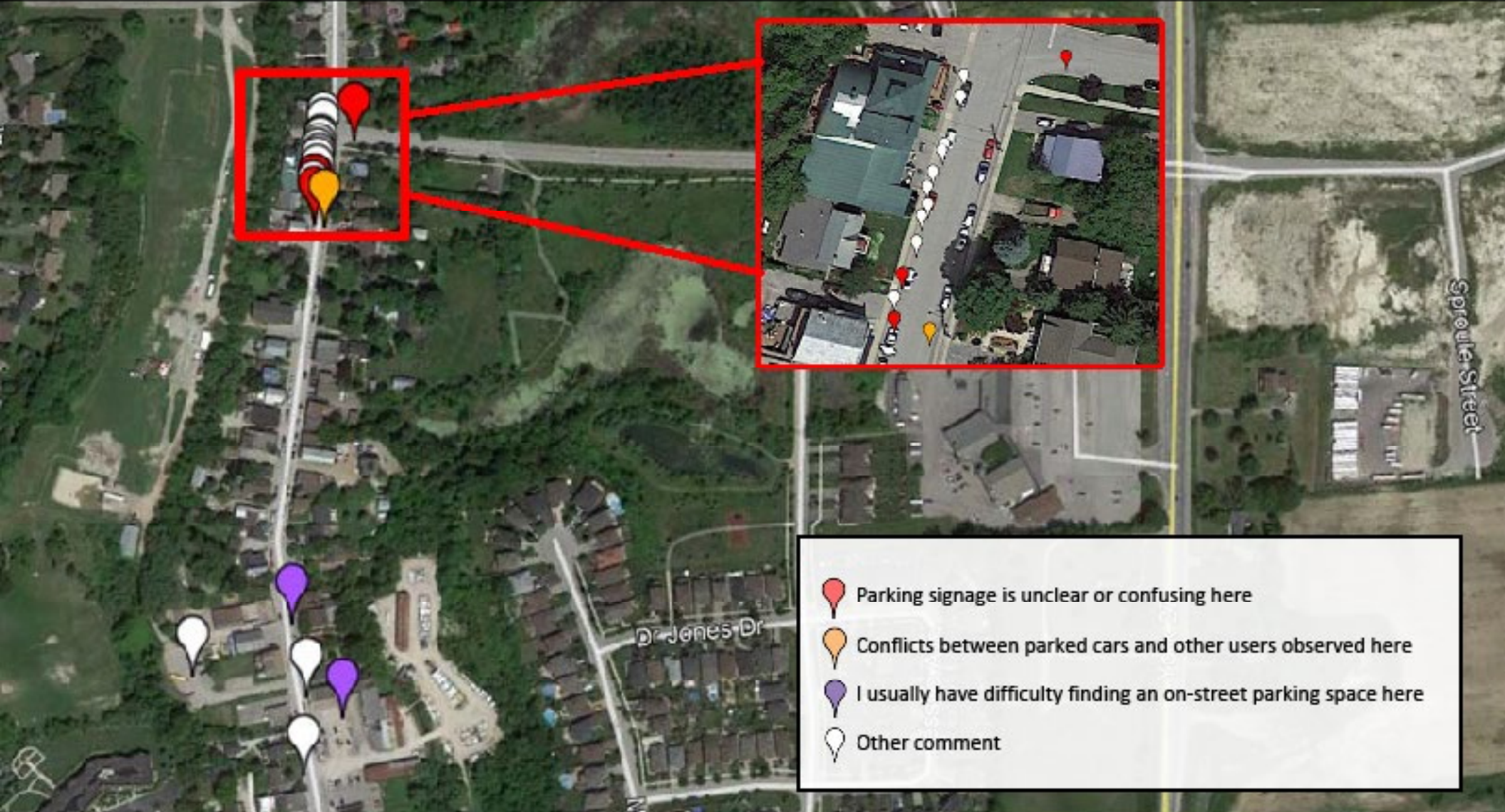
» Wayfinding signage to direct drivers to available parking



» Motivate visitors to park off-street

Schomberg Core Area Parking Issue Hot Spots

Based on the results from the online crowdsourcing map, the following parking related hot spots were identified for the Schomberg Core Area:

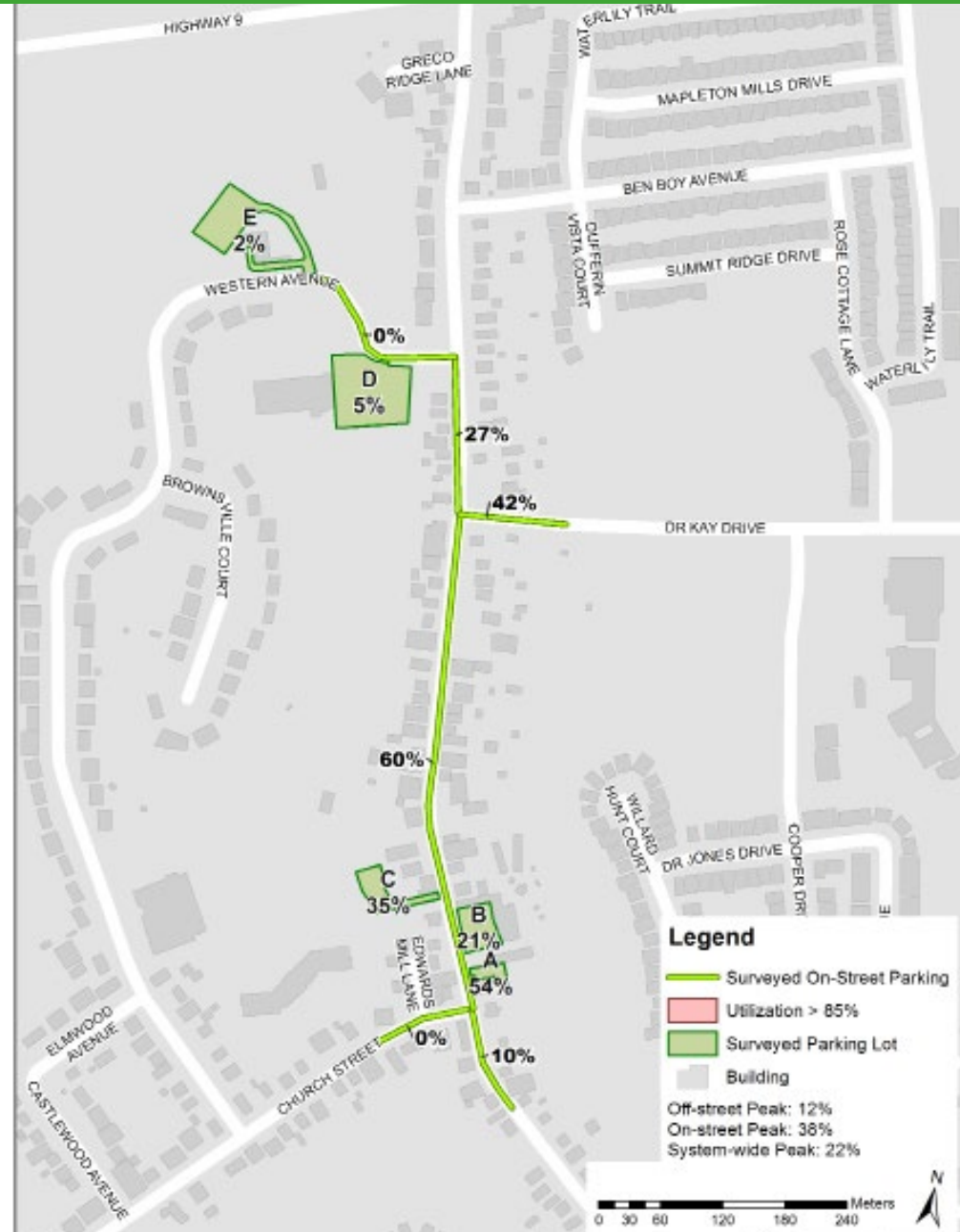


Schomberg Core Area Existing Parking Demand

Parking supply and demand surveys were conducted during the following days and times:

- » Tuesday, March 20 from 8:00 a.m. to 12:00 a.m. (midnight)
- » Friday, March 23 from 6:00 p.m. to 9:00 p.m.
- » Saturday, March 24 from 1:00 p.m. to 6:00 p.m.

Parking surveys found that the peak parking periods occur Weekday midday from 1:00 p.m. to 2:00 p.m. and Friday evening from 6:00 p.m. to 7:00 p.m.



Next Steps

- » Examine future parking needs;
- » Complete a parking policies and strategies assessment; and
- » Provide short, medium and long-term recommendations.

Jamie Smyth

Economic Development Officer
The Corporation of the Township of King
King City ON
L7B 1A1 Canada
T: 905.866.4016
E: jsmyth@king.ca

Peter Richards

Associate Director - Practice Lead, Transportation
Engineering
IBI Group
7th Floor - 55 St. Clair Avenue West
Toronto ON M4V 2Y7 Canada
T: 416 596 1930 ext 61402
F: 416 596 0644
E: peter.richards@ibigroup.com